

1

(1) ア $-9+4 = -5$

イ $\frac{3}{4} \div (-6) = -\frac{3}{4} \times \frac{1}{6} = -\frac{1}{8}$

ウ $-3 + 5 \times (-1)^3 = -3 - 5 = -8$

エ $2a+b - \frac{2a-b}{3} = \frac{6a+3b}{3} - \frac{2a-b}{3} = \frac{6a+3b-2a+b}{3} = \frac{4a+4b}{3}$

オ $\sqrt{2} - \sqrt{8} + \frac{16 \times \sqrt{2}}{\sqrt{2} \times \sqrt{2}} = \sqrt{2} - 2\sqrt{2} + \frac{16\sqrt{2}}{2} = (-1+8)\sqrt{2} = 7\sqrt{2}$

(2) $(x-4):3 = x:5 = (6)$

$5(x-4) = 3x$

$5x-20 = 3x$

$2x = 20$

$x = 10$

42, 43, 49, 52, 55, (56), 58, 61, 61, 63, 65

まじりの値より

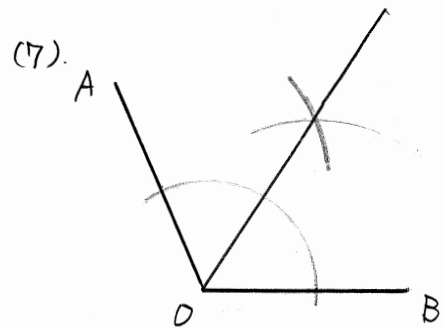
56

(3) $a = \frac{b+c}{2}$

$2 \times \frac{b+c}{2} = a \times 2$

$b+c = 2a$

$c = 2a - b$



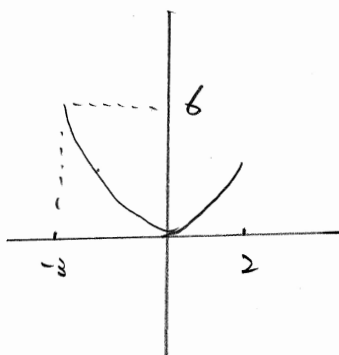
(4) $x^2 = 3x$

$x^2 - 3x = 0$

$x(x-3) = 0$

$x = 0, 3$

(5)

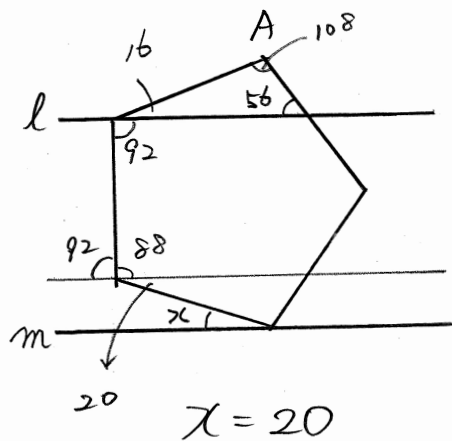


$y = ax^2$

(-3, 6) 代入

$6 = 9a$

$a = \frac{2}{3}$



$x = 20$

2

①

1	2	3	4	5	6
1					0
2		0			
3	0				
4					
5					
6	0				

$y = \frac{6}{2}$ より $xy = 6$

$\frac{4}{36} = \frac{1}{9}$

② 牛肉 1人分

150g

肉じゃが

100g

じゃがいも 1人分

$\frac{1}{2}$ 個

1個

ア. 牛肉に717

$150x + 100y = 2300$

じゃがいもに717

$\frac{1}{2}x + y = 13$

1. $\begin{cases} 15x + 10y = 230 \\ x + 2y = 26 \end{cases} \times 5$

$\begin{cases} 15x + 10y = 230 \\ -) 5x + 10y = 130 \\ \hline 10x = 100 \end{cases}$

$x = 10$

$10 + 2y = 26$

$2y = 16$

$y = 8$

ビーフシチュー 10人分

肉じゃが 8人分